



BOLT

www.bolt.tw

THE BOLT RECOIL SHOCK SYSTEM

B4 SOPMOD

Special Operations Peculiar MODification

Handling Cautions And Instruction Manual

ABOVE
18+



B.R.S.S. is a revolutionary design with International Patents Register

With Tomy Lee's knowledge, the develop team in Bolt Airsoft has created a powerful recoil system called B.R.S.S - Bolt Recoil Shock System. B.R.S.S is a revolutionary paten .The B.R.S.S is utilized an outstanding designation by kinetic energy roduced by piston which then switches to Recoil weight of stock tube and subsequently displacement occurred to reach the outcome of recoil simulator. Such novel devise has been gone through several tests and accordingly BRSS comes into existence!

WARNING

【Handling cautions and instruction manual】

Always read through this manual before operation



This sport gun is developed for enjoying sport shooting through correct sport shooting operation. You can experience unique feel of the airsoft gun, which is a most suitable sport goods to improve your shooting sense, if you recognize its features and operational warnings. As the airsoft gun has the capacity to shoot BB bullets by 50 to 60 meters, careless shooting and wrong operation are dangerous, causing eye damage or other injury. Make sure to read through warnings stipulated below and observe rules and manners for pleasant sport shooting.

▶ Operation of this airsoft gun for competition use is restricted to users of 18 years old or more. Careless shooting and wrong operation are dangerous, causing eye damage other injury.





Always wear eye protective gear.



Never shoot the air gun at places where people and cars pass cross.



Never shoot the airsoft gun towards a person or animal.



Always put the gun in a case or bag when you are carrying it.



You may be punished if you are shooting for a practical joke.



Store the air gun at places out of reach by children.



Always attach the protective plug to the gun muzzle.



BB bullets may be shooting out even if the magazine is removed.



Never look into the gun muzzle.



Always set the selector lever to the Safety position.



Avoid pulling the trigger carelessly.



Release put away your fingers from the trigger, except when you are ready to shoot a target.



Always direct the muzzle towards a safe direction.



Never disassemble or modify the air gun.

The operation procedure varies according to the model. Make sure to operate an air soft gun after recognizing its features. We are not responsible for any accidents, events, injuries or repair costs arising from wrong operation and handling or by modification and disassembly of the airsoft gun.

THE BOLT RECOIL SHOCK SYSTEM

B4 SOPMOD

Special Operations Peculiar MODification

**BOLT®****GOAL**

Our product is designed innovatively as the brand-new electronic gun BOLT which pursues the goal of the perfection in Recoil Simulator. In order to enable the players in the survival game and military collector can own such GBB recoil simulator and AEG sustained firing (shooting) joys simultaneously; therefore, Bolt Recoil Shock System (BRSS) is herewith created.



BRSS

BRSS is a revolutionary patent. The BRSS is utilized an outstanding designation by kinetic energy produced by piston which then switches to Recoil weight of stock tube and subsequently displacement occurred to reach the outcome of recoil simulator. Such novel device has been gone through several tests and accordingly BRSS comes into existence!



AEG with BRSS has the following advantages

- 1 High BB ball capacity of AEG and powerful recoil of GBB available.
- 2 High Durableness. (Integrates many new designs and the components intensity promotion)
- 3 High compatibility and easy to re-equip in the outward appearance.
- 4 Repair easy since the spares is compatible with old system.

THE BOLT RECOIL SHOCK SYSTEM

B4 SOPMOD
Special Operations Peculiar MODification



1 Flash Hider

2 Front Sight (Up - Down)

3 Ejector Button (Dummy)

4 Bolt Catch (Dummy)

5 Trigger

6 Selector (Switch)

7 Delta Ring

8 Rear Sight

9 Charging Handle

10 Grip

11 Crane Stock

12 Magazine Catch

13 Stock Lever

14 Magazine

15 Bolt Plate

16 Grip Dust Cover

17 Sling Mount

18 Bolt Cover





1 Remove the stock button and the stock button cover.



2 Insert the battery inside the stock as shown and connect connectors.

3 Store the connector in the space inside the stock.



4 Install the stock button cover and the stock button.



The B4 SOPMOD velocity : 120 m/s (395fps)



Battery Specification : Li-Po 7.4V 22C or Ni-Cd 9.6V

WARNING

Please use the batteries according to the factory specification in order to avoid malfunction.

THE BOLT RECOIL SHOCK SYSTEM

B4 SOPMOD

Special Operations Peculiar MODification



Pulling the charging handle will expose the hop up adjustment dial in the port cover.



Push the release lever to unlock and pull.



The stock will stop at the first position if it is pulled without pushing in the "Release Lever".

Instruction of Rear Battery Plug Wire

Extra Rear Battery Plug Wire is required when the original was damaged by foreign accident or wire loose.



Rear Battery Plug Wire is enclosed inside the accessory box.

Sling Mount in BOLT B4 SOPMOD



OPTIONAL



5

Variable HOP-UP System



By producing a back-spin on the BB bullets. This system allows for straighter and longer distance shooting than normal air gun. Unlike the fixed type, the BOLT AIRSOFT variable hop up system permits one touch adjustments using the dial and lever, making it an ideal hop up system.

THE BOLT RECOIL SHOCK SYSTEM

B4 SOPMOD
Special Operations Peculiar MODification

ATTENTION

Assembling or disassembling the rear wire correctly will reduce the chances of damaging your wires. If wires do become damaged please contact your local retail shop or contact BOLT AIRSOFT to purchase a new wire set avoid malfunction.

Stock Tube Lock Ring

The red line drawn on the image to the left shows the difference between the B4 SOPMOD and the B4A1 Stock tube lock ring.

B4 SOPMOD



B4 A1



It will be in your best interest to use the proper tools when assembling/disassembling the rear wire set to ensure that your SOPMOD functions properly.

The area where the wires will pass through have been circled red to help show you where the wires will go.



The path area (red circled) for wire pass through to the stock tube where the stock tube lock is at the right position.

Rear Wire Path Diagram



1



The wire set goes through the circled area indicated on the lower receiver below.

2



The dented area on the stock tube lock should match the circled area on the end plate.

3



Pull the wire set through the hole as shown below.

4



Place the wire set on the stock tube path.

5



Install wire cover on to buffer tube while making sure that the wires stay in place.

THE BOLT RECOIL SHOCK SYSTEM

B4 SOPMOD

Special Operations Peculiar MODification

1



NOTE ▶ Melting the loctite on the screw by using heat gun.

Remove the stock tube cover and the wire cover by removing the screws.

2



Before removing the stock tube lock, make sure that your ar-15 wrench is aligned properly before unscrewing the stock tube lock.

3



The red line indicates an area where the wire can be damage, please use caution in this area.

4

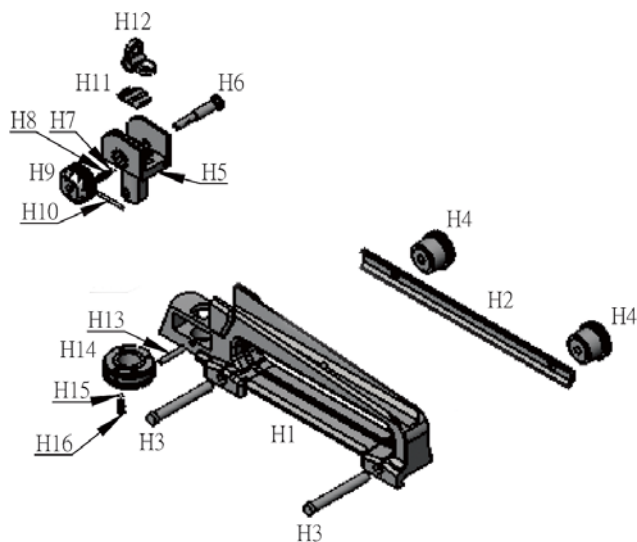


The wire should be held down tightly within the wire path when taking the wire.

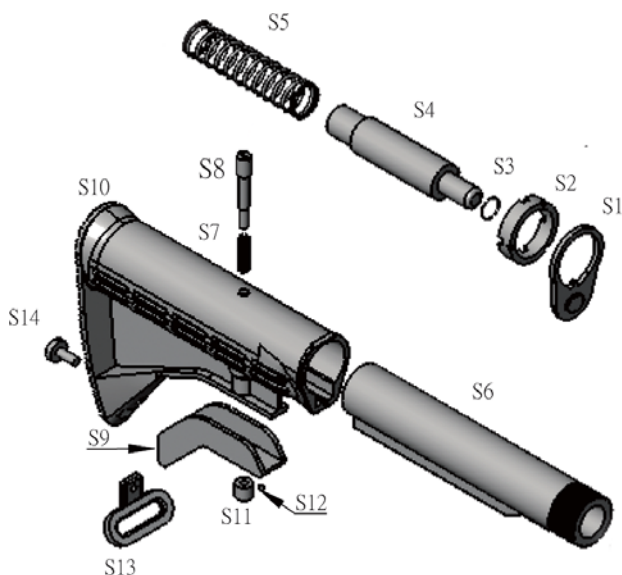
5



Remove gearbox from lower receiver for any maintenance or replacement of parts.



H1	Carry Handle
H2	Carry Handle Locking Plate
H3	Carry Handle Bolts X2
H4	Carry Handle Knob X2
H5	Rear Sight Housing
H6	Rear Sight Windage Screw
H7	Windage Knob Spring
H8	Windage Knob Plunger
H9	Windage Knob
H10	Windage Knob Set Screw
H11	Leaf Spring
H12	Peep Sight
H13	Elevation Knob Pin
H14	Elevation Knob
H15	Elevation Knob Bead
H16	Elevation Knob Spring



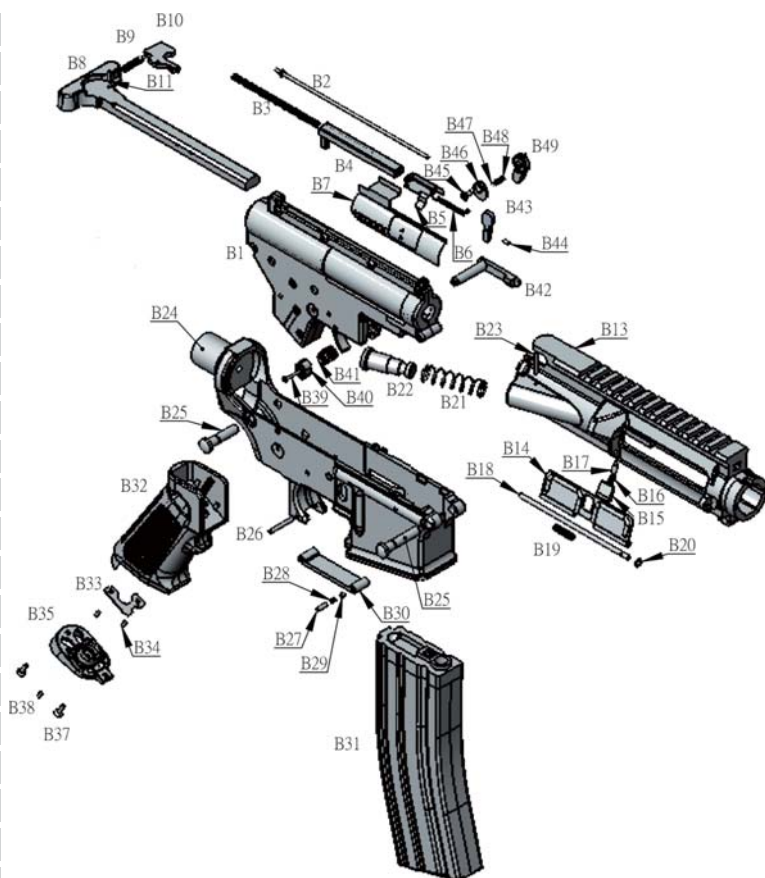
S1	Receiver End Plate
S2	Stock Tube Lock Ring
S6	Stock Tube
S7	Stock Bolt Spring
S8	Stock Bolt
S9	Stock Lever
S10	Retracting Stock
S11	Lever Retainer
S12	Lever Retainer Set Screw
S13	Stock Swivel
S14	Stock Swivel Screw

THE BOLT RECOIL SHOCK SYSTEM

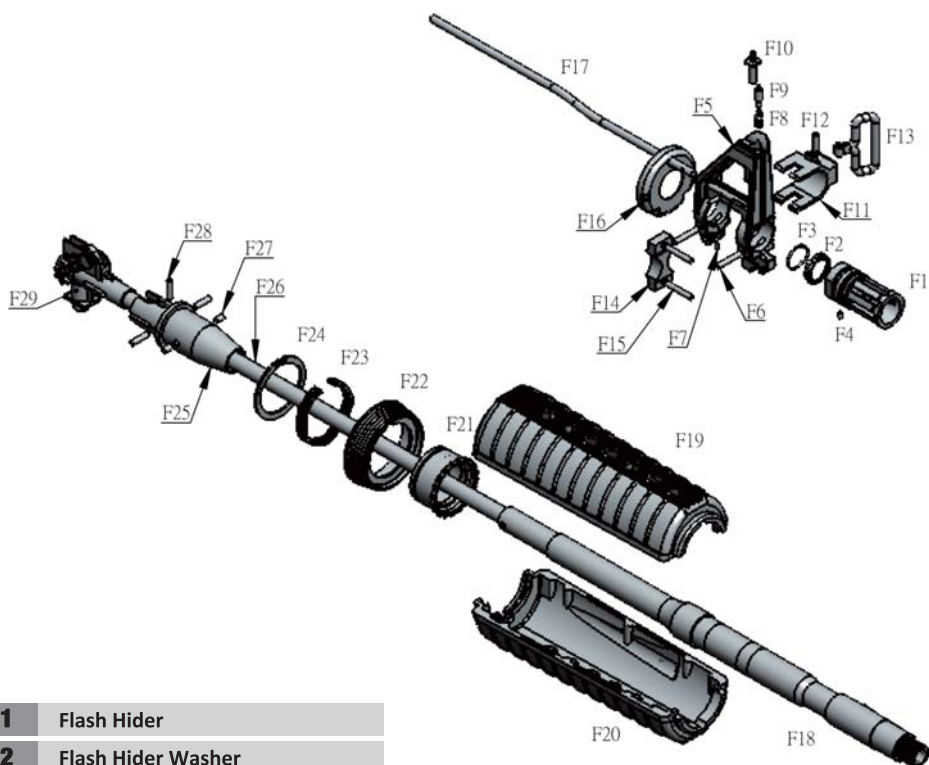
B4 SOPMOD

Special Operations Peculiar MODification

B1	Gear Box
B2	Bolt Carrier Guide Rod
B3	Bolt Carrier Spring
B4	Bolt Carrier
B5	Bolt Lock
B6	Bolt Lock Spring
B7	Bolt Plate
B8	Charging Handle
B9	Charging Handle Latch Spring
B10	Charging Handle Catch
B11	Charging Handle Latch Pin
B13	Upper Receiver
B14	Ejection Port Cover
B15	Ejection Port Cover Lock
B16	Ejection Port Cover Lock Spring
B17	Ejection Port Cover Lock Plunger
B18	Ejection Port Cover Pin
B19	Ejection Port Cover Spring
B20	Pin Retaining Ring
B21	Ejector Button Spring
B22	Ejector Button
B23	Ejector Button Pin
B24	Lower Receiver
B25	Take Down Pin
B26	Trigger Pin
B27	Trigger Guard Lock Pin
B28	Trigger Guard Plunger
B29	Trigger Guard Plunger Spring



B30	Trigger Guard	B41	Magazine Catch Spring
B31	Magazine	B42	Magazine Catch
B32	Grip	B43	Bolt Catch
B33	Grip Fix Plat	B44	Bolt Catch Pin
B34	Grip Screws X2	B45	Selector Screw
B36	Grip Dust Cover	B46	Selector Washer
B37	Motor Cover Screw	B47	Selector Spring
B38	Set Screw "Motor Tension Adjustment"	B48	Selector Bead
B39	Magazine Catch Alex Screw	B49	Selector
B40	Magazine Catch Button		



F1 Flash Hider

F2 Flash Hider Washer

F3 Flash Hider Spring

F4 Set Screw X2

F5 Front Sight Housing

F6 Front Sight Housing Pins X2

F7 Front Sight Screw

F8 Front Sight Spring

F9 Front Sight Plunger

F10 Front Sight

F11 Swivel Base

F12 Front Swivel Pin

F13 Swivel

F14 Swivel Base Lock

F15 Swivel Base Lock Pins X2

F16 Handguard End Cap "Front"

F17 Gas Tube

F18 Outer Barrel

F19 Top Handguard

F20 Lower Handguard

F21 Barrel Nut

F22 Delta Ring

F23 Weld Spring

F24 Barrel Snap Ring

F25 Outer Barrel Base

F26 Internal Barrel

F27 Outer Barrel Base Screws

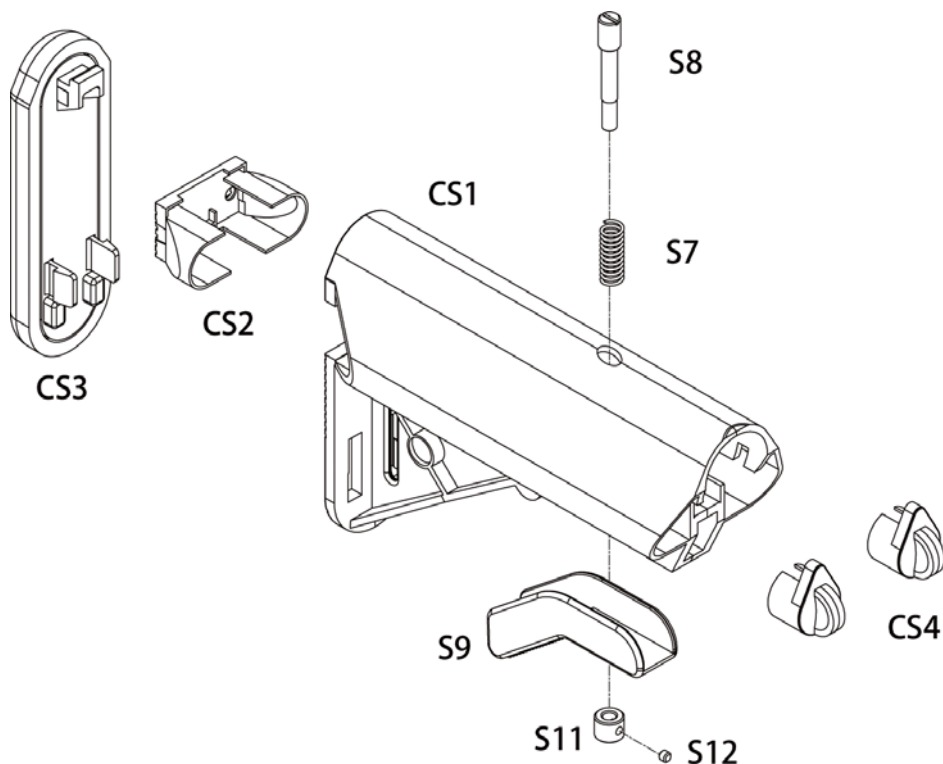
F28 Outer Barrel Base X3

F29 Hop-up Set

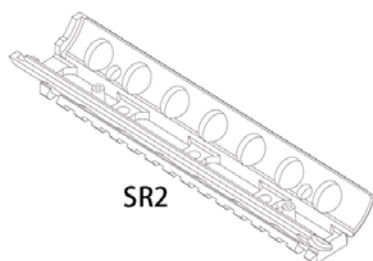
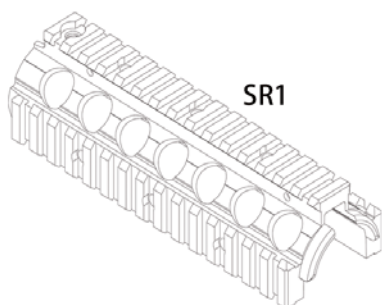
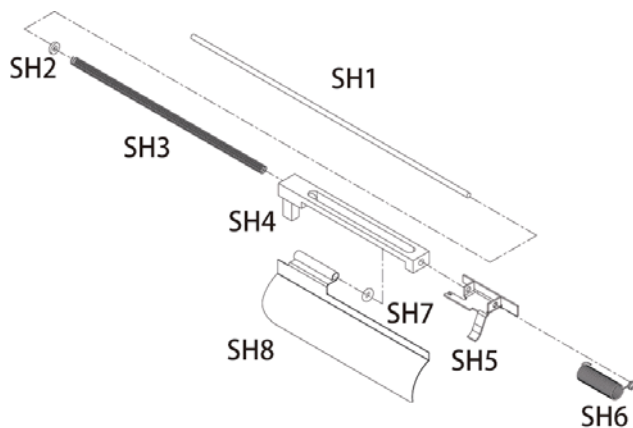
THE BOLT RECOIL SHOCK SYSTEM

B4 SOPMOD

Special Operations Peculiar MODification



CS1	Crane Stock Housing
CS2	Crane Stock Butt Cover
CS3	Crane Stock Butt Plate
CS4	Crane Stock Front Cover
S7	Stock Bolt Spring
S8	Stock Bolt
S9	Stock Lever
S11	Lever Retainer
S12	Lever Retainer Set Screw

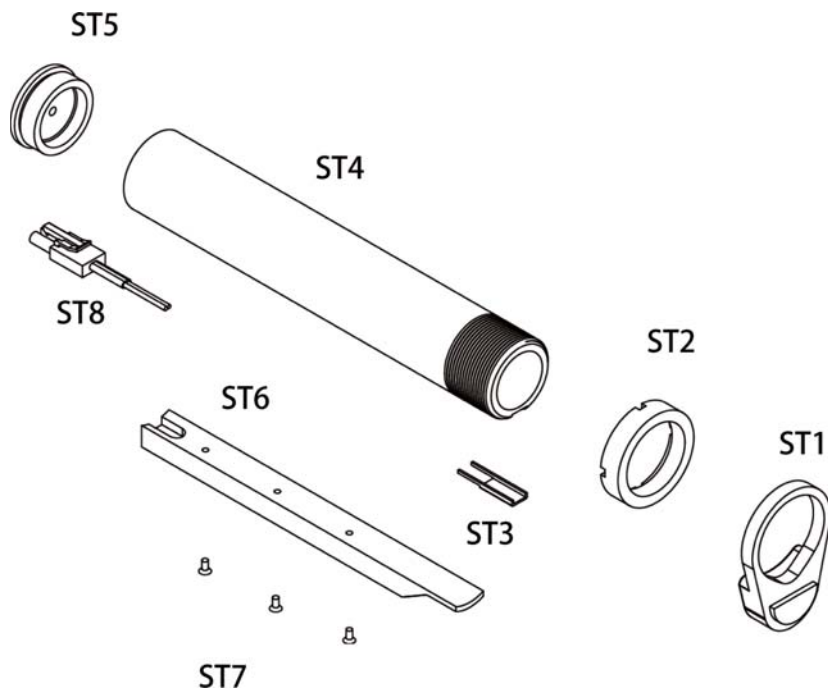


SH1	Bolt Carrier Guide Rod
SH2	Bolt Carrier Guide Rod Washer
SH3	Bolt Carrier Spring
SH4	Bolt Carrier
SH5	Bolt Lock
SH6	Bolt Lock Spring
SH7	Bolt O Ring
SH8	Bolt Plate
SR1	Top Tactical Rail
SR2	Lower Tactical Rail

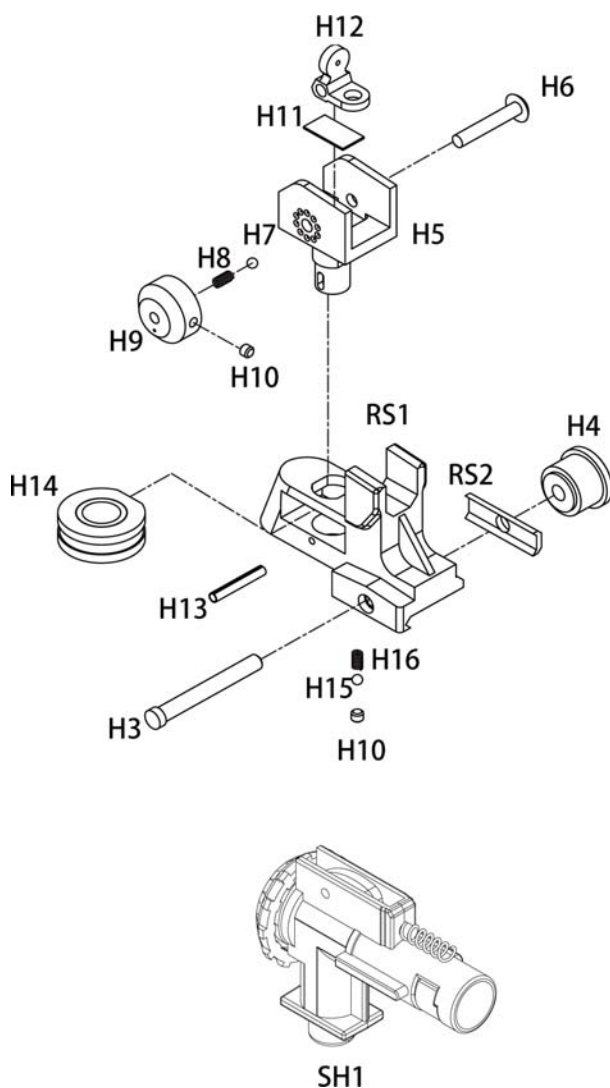
THE BOLT RECOIL SHOCK SYSTEM

B4 SOPMOD

Special Operations Peculiar MODification



ST1	Receiver End Plate
ST2	Stock Tube Lock Ring
ST3	Stock Tube Wire Cover
ST4	Stock Tube body
ST5	Stock Tube butt Plate
ST6	Stock Tube body Wire Cover
ST7	Stock Tube body Wire Cover Set Screw
ST8	Rear Wire Set



SH1	Hop-up Set
RS1	SOPMOD Rear Sight Housing
RS2	SOPMOD Sight Locking Plate
H4	Sight Knob
H5	Rear Sight Housing
H6	Rear Sight Windage Screw
H7	Windage Knob Spring
H8	Windage Knob Plunger
H9	Windage Knob
H10	Windage Knob Set Screw
H11	Leaf Spring
H12	Peep Sight
H13	Elevation Knob Pin
H14	Elevation Knob
H15	Elevation Knob Bead
H16	Elevation Knob Spring

THE BOLT RECOIL SHOCK SYSTEM

B4 SOPMOD

Special Operations Peculiar MODification



BOLT

www.bolt.tw